

# USER MANUAL of Solar Wall Light

This solar wall light offers a futuristic design for public space outdoor lighting applications where the benefits of IK10 vandal resistance are required. LifePO4 battery combined with an intelligent lighting program provides 100% power up to 280lm. The mission of solar bollard light is to comply with the requirement of the Dark Sky Association by limiting the upward light waste ratio (UWLR) to <1%. Limiting upward light reduces environmental light pollution and protects the view of our night sky for all.

We also offer this solar wall light in a wildlife-friendly version retaining all the features of the original product. Wildlife-Friendly lighting is specifically designed to minimize the ecological impact on animals and insects.

## Specification

Solar panel	6.2Watts 5V MONO
LiFePO4 battery	38.4WH 3.2V
LED power	1.5W max
Luminous output(lm)	280lm
Motion sensor type	PIR
Color temperature	2700K~6000K
Protection rate	IP65 IK10
Light size	323*275*195mm
Working program	4H 100% + 13H 25% with 100% when sensor is triggered
Certificates	CE, ROHS, IP65, FCC
Warranty	5 years



## Accessories in package



The plate  
1 piece



Expansion Screw  
2 pieces



Small screws  
2 pieces



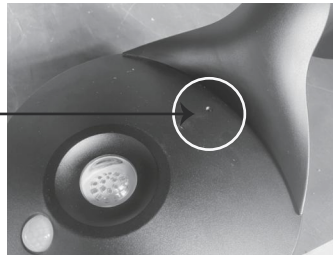
the nut with cap  
2 pieces



Allen Wrench  
1 piece

## How to turn ON/OFF

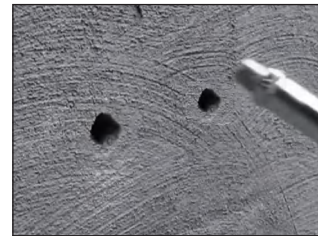
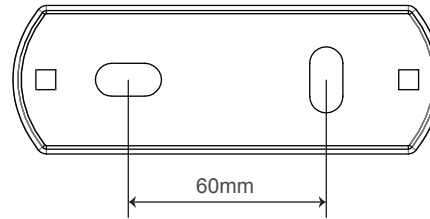
It is inside of the light head.  
Use the allen wrench to  
push ON/OFF.



## Reference for installation



## Size of plate



## How to install the light

Step 1 : Drill 2 holes in on wall with distance 60~65mm as the drawing shows.

Step 2 : Put 2pcs of small screws and 2pcs of big expansion screws into the plate as picture B shows. Please note the concave side should face outward.

Step 3 : Put the 2 pcs expansion screws into the holes and tighten them properly with a screwdriver. (the two small screws **MUST** be put inside before tightening the expansion screws.)

Step 4 : Put the wall light on the plate and tighten it to the plate with 2pcs of the screw cap.

Step 5 : Use the small pin to push the button to turn on the light, then the light will work automatically from dusk to dawn.

## Trouble shot

PROBLEM	REASON	HOW TO SOLVE
Light is off	Switch is off	Turn on the on/off switch of light
	No direct sunshine	Move the light to the direct sunny area
	Continuous cloudy or rainy days	Light will back to work when sun returns
Short working time	There is debris on solar panel	Clean the solar panel
	Location problem	Move the light to the area with direct sunshine
	Continuous cloudy or rainy days	Light will be recharged when sun returns
	Battery life is expired	Replace with a new battery